



| | |
|--------------|------|
| Project | |
| Nomenclature | |
| Type | Date |
| Approval | |
| Notes | |

The BLSP is an LED linear strip fixture designed for surface and suspended mounting. It is well suited for indoor use where high efficiency, row-mountable task lighting is required. Its narrow strip design and modern profile make it an ideal fixture for task lighting applications.

Luminaire Summary

Features

- Operating temperature ranges available from -40C to 40C
- L70 of 99,000+ hours, L90 of 30,000+ hours
- Standard 0 - 10V dimming
- Available in 2700K, 3000K, 3500K, 4000K, 5000K and 6500K
- Lumen packages are available ranging from 1' 1.125L (1126lm) to 8' 23L (23191lm)

Approvals

- ETL certified to UL Canada and United States standards
- Made with UL Listed components
- Dry and Damp Environment Rated
- DLC Listed

Mounting

- Holes provided for V-hangers, S-hook chain-mounting, or aircraft cables
- Optional pendant-mount and row-mount brackets
- Knockouts provided for row-mounting

Construction

- Manufactured in Ontario, Canada
- Powder-coated in high reflectance gloss white (other colours available)
- Precision bent for added strength and rigidity
- Welded end caps

Electrical

- Available in 120-277V, 120-347V, 347V and 480V

Options

- Custom lengths available
- Wireless Controls Available
- 90 and 95+ CRI Options Available
- 120-347V(UN3) Available

Ordering Information

Fill in the fields below with your product selections. If you need help with this section, contact your local sales professional.



| | | | | | |
|------|---|---|---|---|---|
| 1 | 2 | 3 | 4 | 5 | 6 |
| BLSP | | | | | |

| Series | Length | Lumen Output | | CRI | Colour Temp | Voltage | | |
|--------|--------------|--------------|-----------|----------------------------|-------------|-------------|------------|----------------|
| BLSP | 1' - 1' (ft) | 1' 1.125L | (1126 lm) | 4' 10.5L | (10430 lm) | 8 - 80 CRI | 27 - 2700K | UNV - 120-277V |
| | 2' - 2' (ft) | 1' 1.375L | (1377 lm) | 4' 11.5L | (11291 lm) | 9 - 90 CRI | 30 - 3000K | UN3 - 120-347V |
| | 4' - 4' (ft) | 2' 1.75L | (1755 lm) | 8' 5L | (5345 lm) | 1 - 95+ CRI | 35 - 3500K | 347 - 347V |
| | 8' - 8' (ft) | 2' 2.25L | (2253 lm) | 8' 7L | (7541 lm) | | 40 - 4000K | 480 - 480V |
| | * - Custom | 2' 2.75L | (2753 lm) | 8' 9L | (9683 lm) | 50 - 5000K | | |
| | | 4' 2.5L | (2603 lm) | 8' 11L | (11772 lm) | 65 - 6500K | | |
| | | 4' 3.5L | (3673 lm) | 8' 13L | (13807 lm) | | | |
| | | 4' 4.5L | (4716 lm) | 8' 15L | (15789 lm) | | | |
| | | 4' 5.5L | (5734 lm) | 8' 17L | (17717 lm) | | | |
| | | 4' 6.5L | (6725 lm) | 8' 19L | (19591 lm) | | | |
| | | 4' 7.5L | (7690 lm) | 8' 21L | (21412 lm) | | | |
| | | 4' 8.5L | (8629 lm) | 8' 23L | (23191 lm) | | | |
| | | 4' 9.5L | (9542 lm) | **L - Custom lumen package | | | | |

Options

Lenses

L18 | Frosted Lens

Cords

- W3xx | White 16/3 (Specify Length)
- W4xx | Black 16/3 (Specify Length)
- W59xx | White 16/5 (Specify Length)
- W*** | Other Options Available*

| Key | Cord Length | Key | Cord Length |
|-----|-------------|-----|-------------|
| 6 | 6FT | 15 | 15FT |
| 10 | 10FT | 20 | 20FT |

Ex. W406 would be 16/3 Black, 6FT

Motion Sensors

- W26 | Photocell Motion Sensor
- W57 | Dimming Motion Sensor (dims to 50% when unoccupied)
- W53* | On/Off
- W8* | High/Low
- WX16 | Microwave Dimmable Sensor
- W** | Other Options Available*

Wire Guard

- G1 | Heavy Duty White
- G5 | Heavy Duty Black

Finish

- BLANK | Standard Gloss White
- C5 | Matte Black
- CUSTOM* | Custom Colour Choice

Dimming

- B11 | 0-10V Dimming Leads
- B12 | Line Voltage Dimming
- B27 | Dim-to-off Driver
- B** | Other Options Available*

Controls

- WC10* | Encelium Wireless Controls
- WC18* | NX Wireless Controls
- WC19* | Avi-on Wireless Controls
- WC22* | JDRF Wireless Controls

Emergency Driver

- B17 | UL924 6W Battery Back-up
- B24 | UL924 10W Battery Back-up
- B38 | UL924 15W Battery Backup
- F8 | UL924 Emergency Relay

Packaging

- BLANK | Individually Boxed on Pallets
- P0 | Bulk Packaging
- P** | Other Options Available*

Mounting

- M1 | V-Hangers
- M2xx | V-Hanger with Aircraft Loop Cables
- M3xx | Y-Toggle Aircraft Cables
- M24 | Single Pendant Mount(3/4 Hub)
- M** | Other Options Available*

| Key | Aircraft Length | Key | Aircraft Length |
|-----|-----------------|-----|-----------------|
| 5 | 5FT | 15 | 15FT |
| 10 | 10FT | 20 | 20FT |

Ex. M305 would be Y-Toggle, 5FT

Modular Wiring

- W27XYZC | Modular Power Cable
- W22XY | Molex Row Mounting Wiring

See page 7

Warranty

- CL7 | 10-Year Comprehensive Warranty Upgrade

Documentation and Resources

All files and resources are available on our website for download. Files and resources are also embedded as links in this document, listed below. Additional files may be available upon request. Please contact your local sales agent [here](#) or contact sales@bjtake.com for more information.

- BLSP - Installation Instructions
- BLSP-1FT-1.125L
- BLSP-1FT-1.375L
- BLSP-2FT-1.75L
- BLSP-2FT-2.25L
- BLSP-2FT-2.75L
- BLSP-4FT-2.5L
- BLSP-4FT-3.5L
- BLSP-4FT-4.5L
- BLSP-4FT-5.5L
- BLSP-4FT-6.5L
- BLSP-4FT-7.5L
- BLSP-4FT-8.5L
- BLSP-4FT-9.5L
- BLSP-4FT-10.5L
- BLSP-4FT-11.5L
- BLSP-8FT-5L
- BLSP-8FT-7L
- BLSP-8FT-8L
- BLSP-8FT-9L
- BLSP-8FT-11L
- BLSP-8FT-13L
- BLSP-8FT-15L
- BLSP-8FT-17L
- BLSP-8FT-19L
- BLSP-8FT-21L
- BLSP-8FT-23L

Certifications and Listings

Certifications that apply to this fixture and its possible configurations are listed here. More information available upon request.

| Icon | Description |
|------|----------------------------------|
| | Wireless Controls Available |
| | DLC Listed |
| | ETL Listed |
| | 90 and 95+ CRI Options Available |
| | 120-347V(UN3) Available |

Usage Applications

This fixture can be used in a variety of applications, and is ideal for the following:

| Usage Application |
|--------------------------|
| Manufacturing Facilities |
| Storage |
| Offices |
| Schools |
| Retail Stores |
| Distribution Facilities |
| Processing Plants |
| Aisle Lighting |

Warranty Statement

BJ Take products are tested and/or inspected prior to being packaged for shipment and are guaranteed from the day the product is shipped for a period of ten-year LED chip warranty and a five-year comprehensive component warranty. This can be upgraded to a ten-year comprehensive warranty on request.

Important Information

Below you will find the available wattage charts for the BLSP. For any required specifications that are not listed here, please contact our sales team at sales@bjtake.com to request any additional information.

BLSP, 1 Foot Wattage

| Size | Lumen Output | Actual Lumen Output | Fixture Wattage | Lumens per Watt |
|------|--------------|---------------------|-----------------|-----------------|
| 1' | 1.12 | 1126 | 7.30 | 153.60 |
| 1' | 1.38 | 1377 | 9.20 | 148.90 |
| 2' | 1.75 | 1755 | 11.10 | 158.30 |
| 2' | 2.25 | 2253 | 14.70 | 153.60 |
| 2' | 2.75 | 2753 | 18.50 | 148.50 |

BLSP, 4 Foot Wattage

| Size | Lumen Output | Actual Lumen Output | Fixture Wattage | Lumens per Watt |
|------|--------------|---------------------|-----------------|-----------------|
| 4' | 2.50 | 2603 | 17.90 | 145.20 |
| 4' | 3.50 | 3673 | 25.60 | 143.50 |
| 4' | 4.50 | 4716 | 33.30 | 141.80 |
| 4' | 5.50 | 5734 | 40.90 | 140.10 |
| 4' | 6.50 | 6725 | 48.60 | 138.40 |
| 4' | 7.50 | 7690 | 56.30 | 136.70 |
| 4' | 8.50 | 8629 | 63.90 | 135.00 |
| 4' | 9.50 | 9542 | 71.60 | 133.30 |
| 4' | 10.50 | 10430 | 79.30 | 131.60 |
| 4' | 11.50 | 11291 | 86.90 | 129.90 |

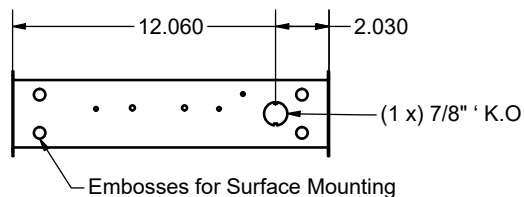
BLSP, 8 Foot Wattage

| Size | Lumen Output | Actual Lumen Output | Fixture Wattage | Lumens per Watt |
|------|--------------|---------------------|-----------------|-----------------|
| 8' | 5 | 5345 | 35.70 | 149.60 |
| 8' | 7 | 7541 | 51.00 | 147.90 |
| 8' | 9 | 9683 | 66.30 | 146.10 |
| 8' | 11 | 11772 | 81.50 | 144.40 |
| 8' | 13 | 13807 | 96.80 | 142.60 |
| 8' | 15 | 15789 | 112.10 | 140.90 |
| 8' | 17 | 17717 | 127.40 | 139.10 |
| 8' | 19 | 19591 | 142.60 | 137.40 |
| 8' | 21 | 21412 | 157.90 | 135.60 |
| 8' | 23 | 23191 | 173.30 | 133.90 |

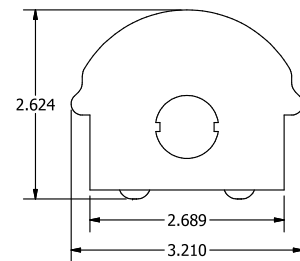
BLSP, Light Loss Factor (LLF)

| CCT | Output% |
|-------|---------|
| 2700K | 92.95 |
| 3000K | 95.51 |
| 3500K | 96.80 |
| 4000K | 100.00 |
| 5000K | 101.28 |
| 90CRI | 84.72 |

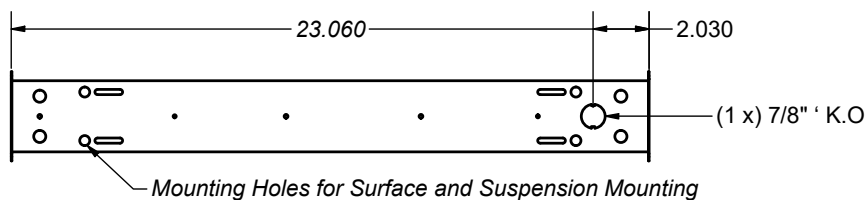
BLSP, 1 Foot Side Dims



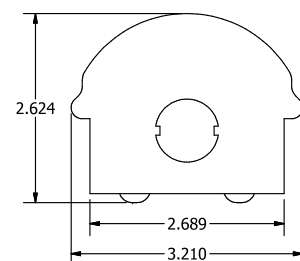
1FT End View



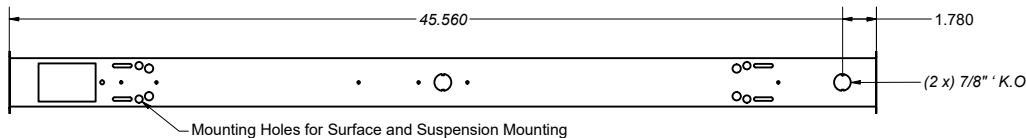
BLSP, 2 Foot Side Dims



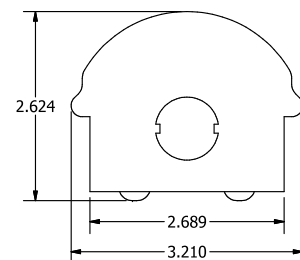
2FT End View



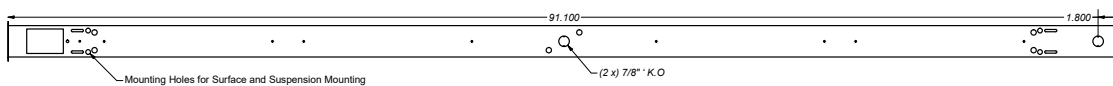
BLSP, 4 Foot Side Dims



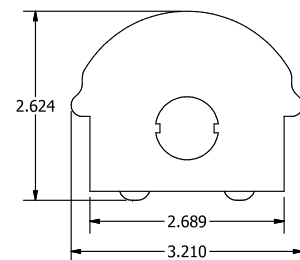
4FT End View



BLSP, 8 Foot Side Dims



8FT End View

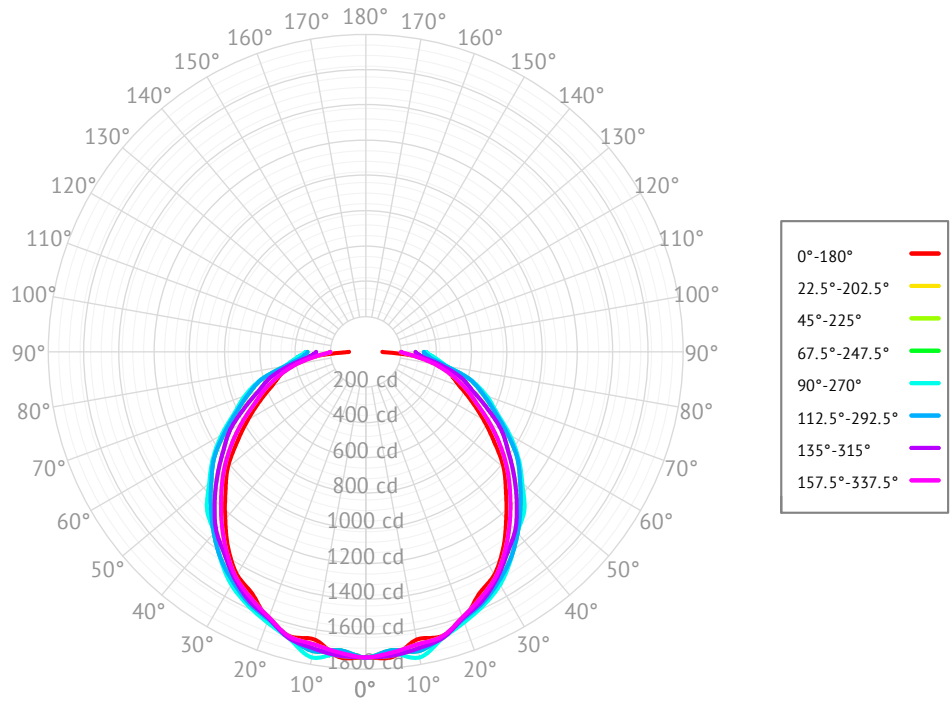


- * Drawings aren't to scale
- * Standard tolerances apply
- * Specifications may change without notice

BLSP-4FT-5.5L-840-L18

Cone of Light

| Mtg Height | Light Level | Beam Diameter |
|------------|-------------|---------------|
| 6.00 | 48.10 | 17.40 |
| 8.00 | 27.10 | 23.20 |
| 10.00 | 17.30 | 29.00 |
| 12.00 | 12.00 | 34.80 |
| 14.00 | 8.80 | 40.60 |
| 16.00 | 6.80 | 46.40 |

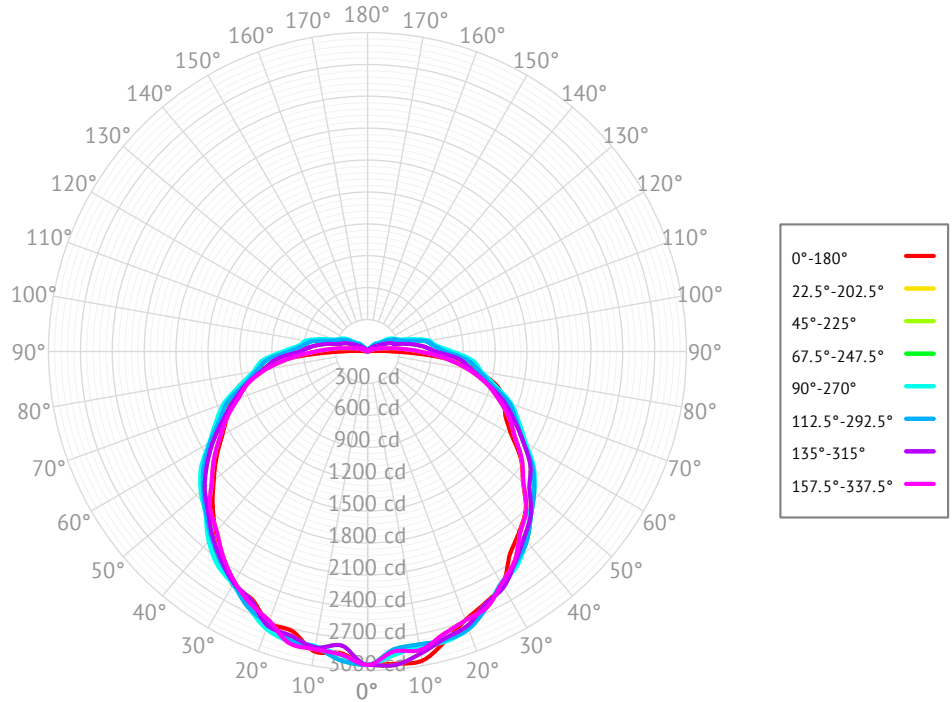


Based on 'BLSP-4FT-5.5L-840-L18', ie. (BLSP, 4 foot, 5500lm, 80 CRI, 4000K, w/ L18 Frosted Acrylic Lens)

BLSP-8FT-11L-840-L18

Cone of Light

| Mtg Height | Light Level | Beam Diameter |
|------------|-------------|---------------|
| 6.00 | 81.90 | 24.20 |
| 8.00 | 46.10 | 32.20 |
| 10.00 | 29.50 | 40.30 |
| 12.00 | 20.50 | 48.40 |
| 14.00 | 15.00 | 56.40 |
| 16.00 | 11.50 | 64.50 |

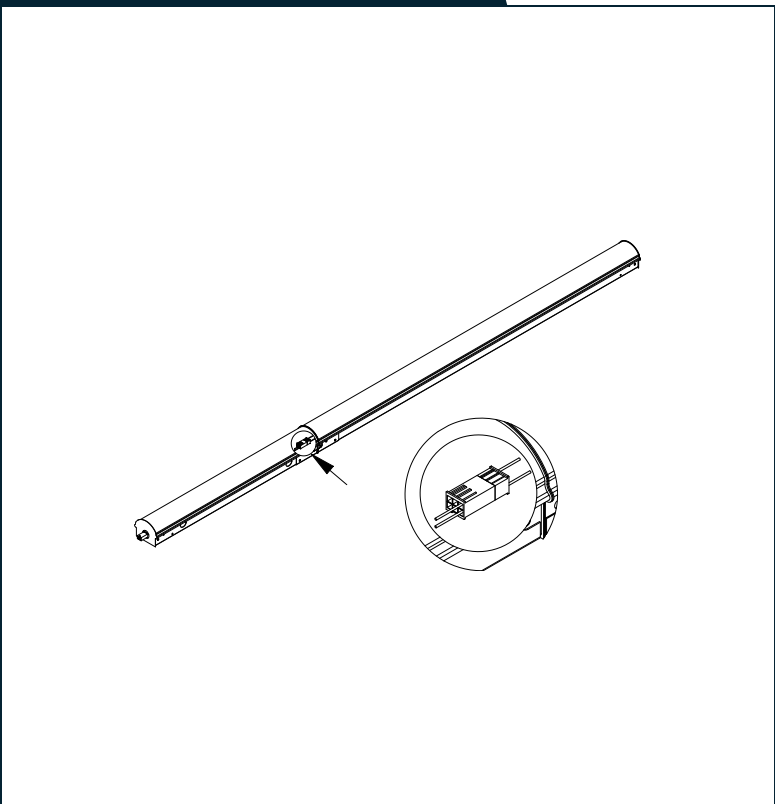


Based on 'BLSP-4FT-5.5L-840-L18', ie. (BLSP, 8 foot, 11000lm, 80 CRI, 4000K, w/ L18 Frosted Acrylic Lens)

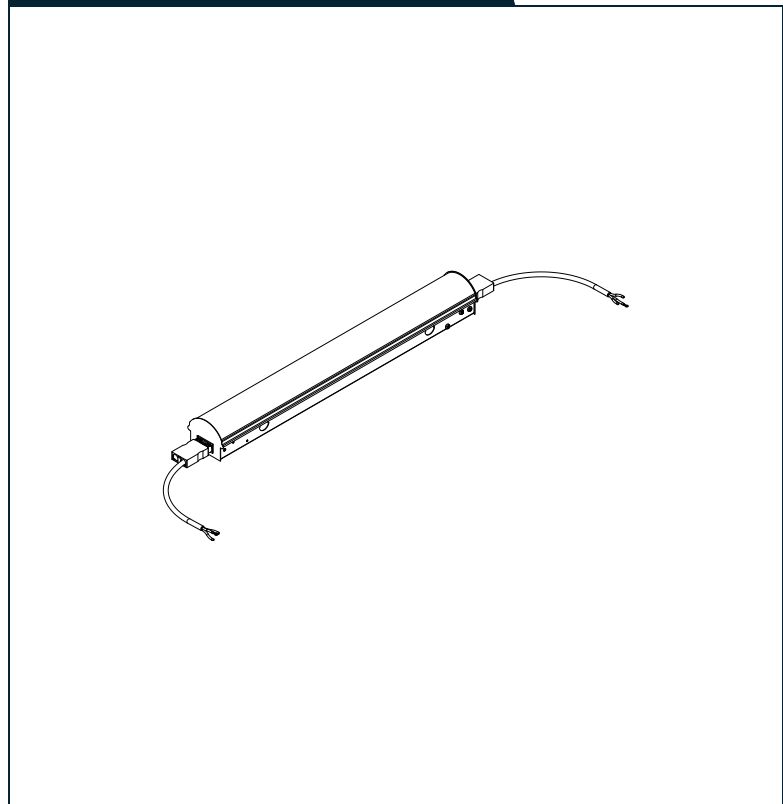
Modular Wiring

The BLSP has options for modular wiring. Below you will find the diagrams for these wiring options, and the relevant option codes necessary for ordering them.

W22XY - Molex Row Mounting Wiring



W27XYZC - Modular Power Cable



W22XY - Molex Row Mounting Wiring

| X - Style | Y - Poles |
|-----------|------------|
| E - End | 3 - 3 Pole |
| . | 4 - 4 Pole |
| . | 5 - 5 Pole |
| . | 6 - 6 Pole |

Example: **W22E6** (see image above)

W27XYZC - Modular Power Cable

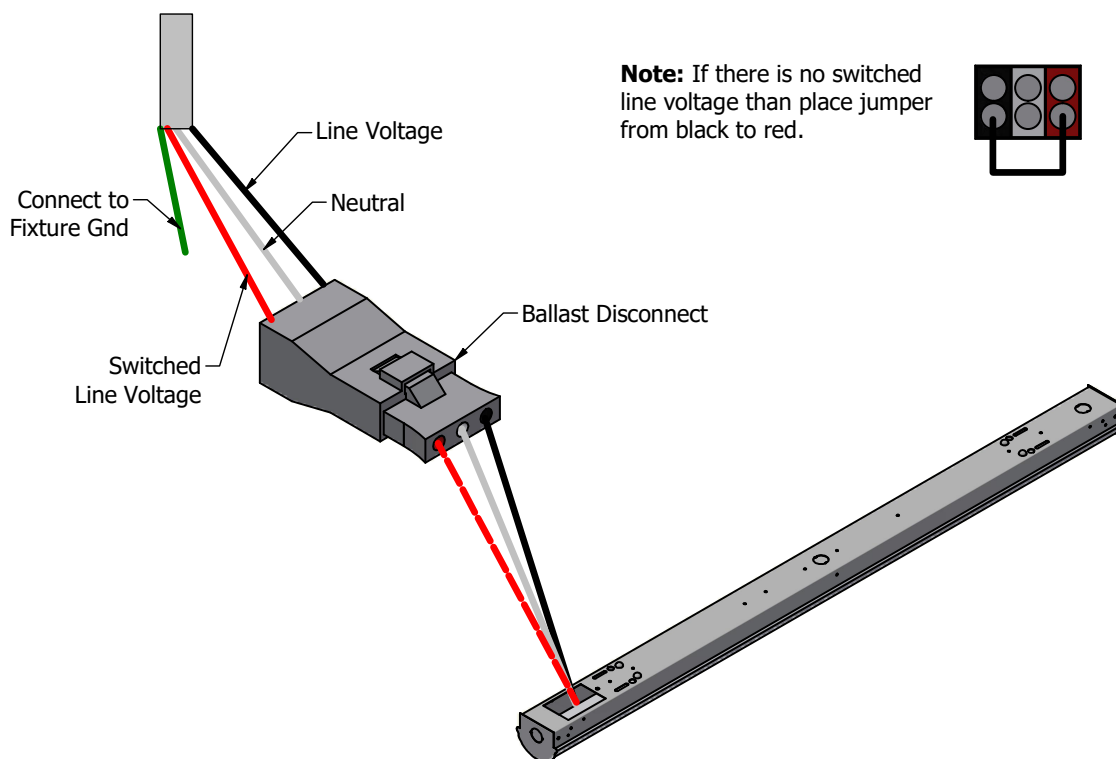
| X - Style | Y - Poles | Z - Wiring | C - Colour |
|-----------|------------|------------------|---------------|
| S - Side | 3 - 3 Pole | Blank - Standard | Blank - White |
| E - End | 4 - 4 Pole | E - End of Row | B - Black |
| T - Top | 5 - 5 Pole | . | G - Grey |
| . | 6 - 6 Pole | . | . |

Example: **W27E3** (see image above)

Emergency Battery Plan - 10W

| Emergency Lighting | Solution System Components | System Operation |
|--|---|--|
| Option Code 'B17' - UL 924 listed components that are factory installed in the luminaire | UL 924 listed 10-watt battery integral to the luminaire | Loss of normal power is detected by the B17 emergency light solution and the power supply is switched automatically to the 10-watt integral battery pack which powers the emergency LED lighting driver. |
| | UL 924 listed LED emergency lighting driver integral to the luminaire | The battery pack and emergency LED driver are UL 924 certified to provide a minimum of 90-minutes of emergency lighting. |
| | Wiring options for both switched and unswitched emergency lighting | |

Emergency Lighting Wiring



Important Information

More information on emergency lighting options and configurations available on request.